

 **BEYOND
DIMENSIONS**
— WITH GYPROC® —



Design Challenge 2025-2026

Generic Preparation Material

Note: All reading material links are embedded within the text (**hyperlinked**). Please click on the [underlined words](#) to access the respective resources.

Beyond Dimensions with Gyproc Design Challenge 2.0 invites students to design **two floors** (Ground + First) of a proposed high-rise commercial building, including the **façade design** limited to the Ground and First floors, using **innovative internal and external Drywall systems**. While the primary focus remains on Drywall solutions, participants may also explore other Gyproc products, though this is optional and not mandatory.

The generic **preparatory material shared below** focuses on interior and exterior Drywall systems only.



Image Source: www.gyproc.in

Here's a **quick definition of drywall systems** to help you before diving into the reading material:

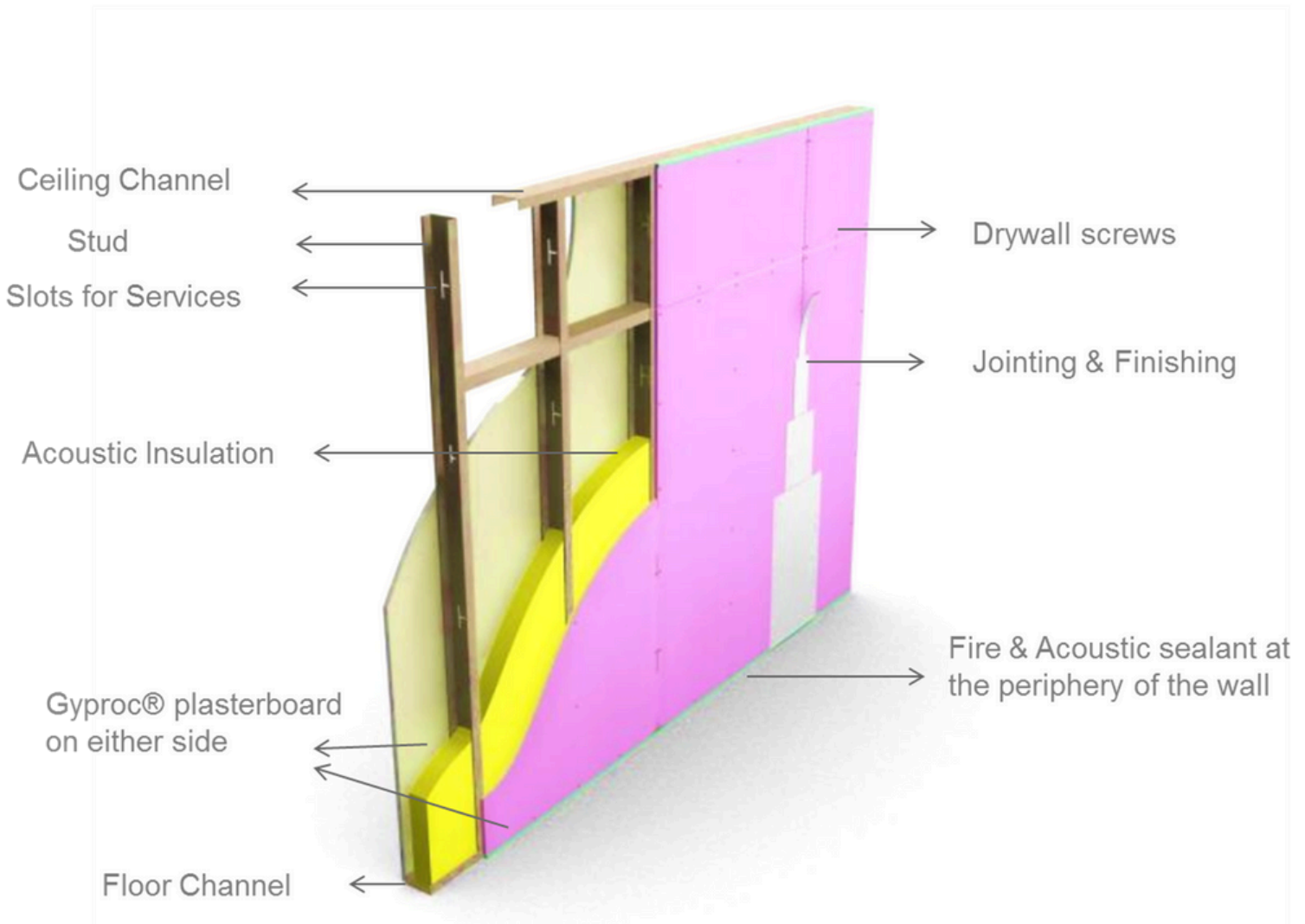


Image Source: www.gyproc.in

Drywall is a **high performance light-weight partition system** consisting of **GI steel frame** encased with **gypsum plasterboards** on either side attached through self drilling drywall screws. The joints are then taped and finished with **gypsum jointing** compound.

- **Components of Drywall System:** Understand what goes into creating a drywall.
 - Metal Framing and Accessories
 - Gypsum Plasterboards
 - Jointing and Finishing
 - Associated Products

Note: All reading material links are embedded within the text (**hyperlinked**). Please click on the [underlined words](#) to access the respective resources.

MAIN READING MATERIAL:

1 [Gyproc Drywall Handbook: Your Introduction to Drywall Systems/Solutions.](#)

(A **comprehensive handbook** that introduces you to all the basics; Definitions, Principles, & Components of drywall systems along with typical details of drywall construction etc!). Also, [Click here](#) to learn more from the website page!

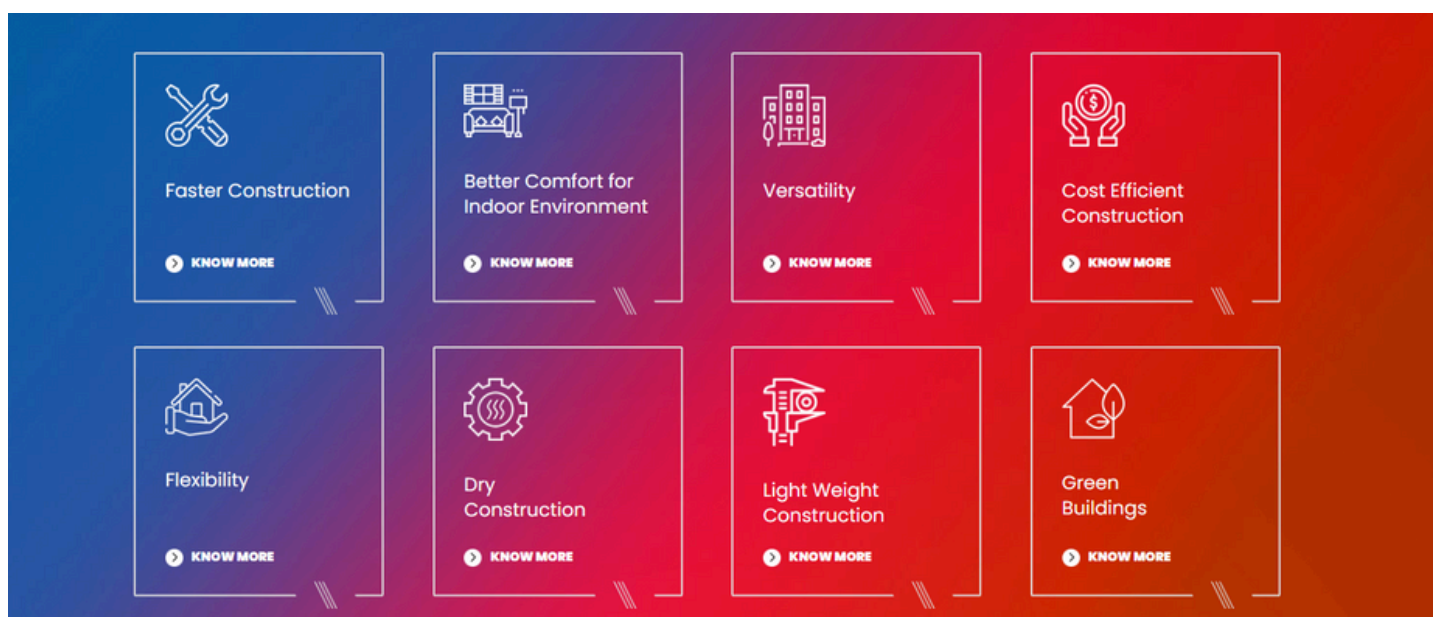
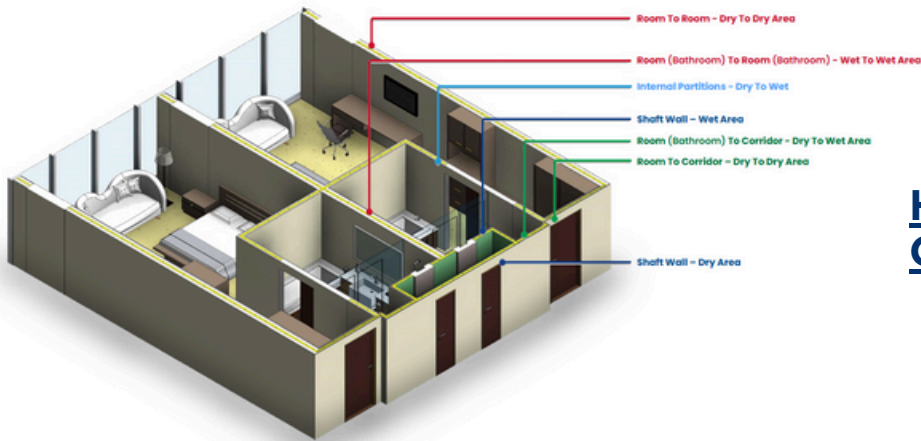


Image Source: www.gyproc.in

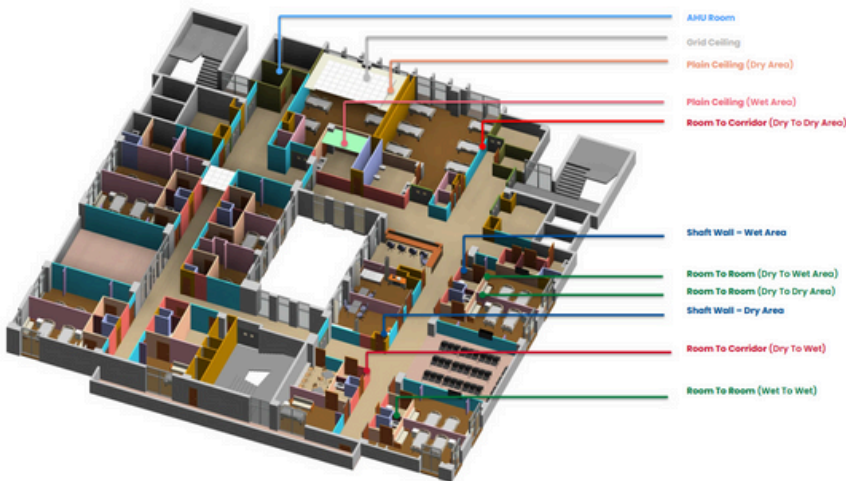
2

Discover how **Gyproc Drywalls** can be tailored to meet design requirements across **diverse building typologies and sectors.**

A) Your **Guide Books** to:



HOSPITALITY SECTOR
GUIDE BOOK- Click Here!



HEALTHCARE SECTOR
GUIDE BOOK- Click Here!

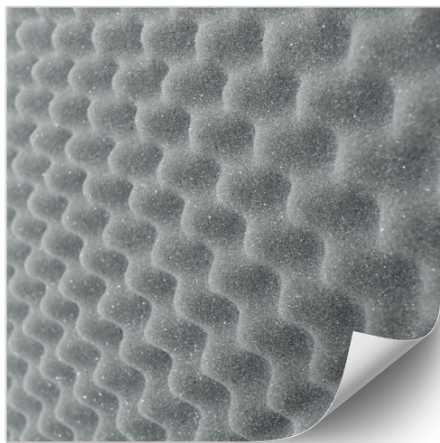


WORKSPACE SECTOR
QUICK READ- Click Here!

B) Additionally **Read More on Website:**

- [Health Care Sector](#)
- [Hotel/Hospitality Sector](#)
- [Office Spaces](#)

3 Understand the **3** of the most important aspects of **Building sciences** that **Gyproc Dry Walls** address:



[Building Acoustics](#)



[Fire Protection](#)



[Indoor Air Quality](#)

4 Explore the **Components of Drywall Systems:** Understanding what goes into creating a drywall.

A) [Plaster Boards](#)

Plasterboards are a **key component of Drywall systems**, providing superior **fire resistance, mold and moisture protection, along with acoustic and thermal insulation** to ensure occupant comfort and safety. Different [types of plasterboards](#) are available, each designed to deliver specific functions and performance benefits.

Exclusively, read about the **below plasterboards:**

- [Gyproc Glasroc H board](#)

Gyproc Glasroc H board is the new generation plasterboard for **wet area applications**. It provides **excellent water resistance & mold resistance**. It also retains its strength even in wet state.



Image Source: www.gyproc.in

- [Gyproc Habito Board](#)

Gyproc Habito board is Revolutionary Gypsum Board. It is **strong and durable**, allows users to **easily mount heavy items** like shelves, cabinets, and TVs directly onto the wall without drills or special fixings—just screw it in!



Image Source: www.gyproc.in

- [Gyproc Duraline Board](#)

Gyproc Duraline Board is designed for walls exposed to **heavy material & equipment movement**, human interactions, subjected to bangs, wear & tear, accidental impacts & crowd pressure.



Image Source: www.gyproc.in

- **Gyproc Glasroc X board (Exterior Applications - Best Choice!)**

Glasroc X Board is a high performance board with a gypsum core containing special additives for moisture and mould resistance. Glasroc X is reinforced board with a **glass-mat** on both surfaces and finished with a **UV resistant** coating, providing outstanding performance in humid environments including **exterior applications**.



Image Source: www.gyproc.in

B) Metal Framing & Accessories

A **drywall** or false ceiling system has a **strong spine of GI metal framework** with plasterboard as its face. The **metal framework** gives the system its **strength, long life and enhanced performance**.

Also, exclusively, read about

GypSerra Framing System



Image Source: www.gyproc.in

C) Jointing & Finishing Products



Image Source: www.gyproc.in

Jointing and finishing is the process through which **gypsum Boards** systems are transformed into smooth, structurally sound walls and ceilings. This process eventually determines the look of the interiors.

[Click here](#) to read more on the detailed brochure

D) Gypsum Plasters

Gypsum plastering is an environmental friendly alternative to traditional sand-cement application for **internal plastering surfaces**.



Image Source: www.gyproc.in

[Click here](#) to read more on the detailed brochure

5 Videos on DryWall Systems:

Don't forget to check out the [videos](#) available on **Gyproc website**.

UNDERSTAND THE EXTERIOR DRYWALL SYSTEMS!



Exterior Drywalls by Gyproc is a one stop solution for achieving a light-weight sustainable solution as opposed to a Brick/Block work. It is typically a partition system with **GI frames** in between encased by boards on either side and finished with suitable Jointing Compound ,added with a **layer of waterproofing** and **rendering on the exterior surface**.

Exterior Drywall Systems are used for

Facades and External wall assemblies!

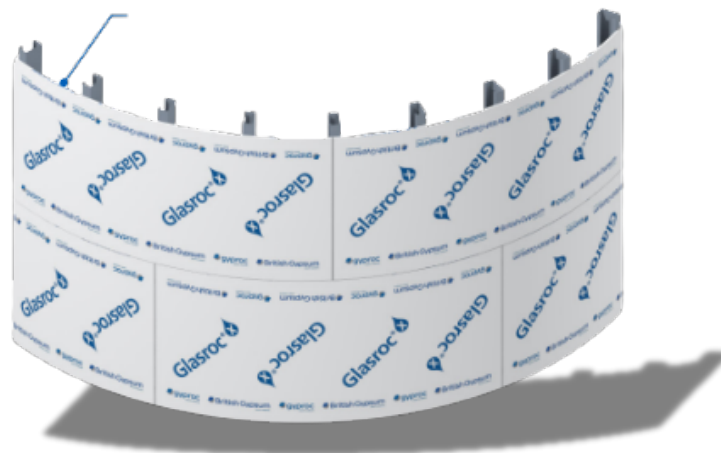


[Click here](#) to access the
External Drywall Systems Handbook

“WHO SAYS EXTERIOR WALLS HAVE TO BE FLAT?”

Exterior Drywall Solutions by Gyproc

Innovate and experiment with façades using plaster boards such as **Glasroc X** to create curvilinear, parametric, or expressive forms that are constructible.



Visit the official website of **Saint-Gobain Gyproc** www.gyproc.in to **explore and access all the resources and offerings** to enhance your knowledge.



Design Challenge 2025-2026

Thank You!



Note: All reading material links are embedded within the text (**hyperlinked**). Please click on the **underlined words** to access the respective resources.